



The "Warlingham" Century of Pond Farming
Hinuera 1908 – 2010.

Produced by Fiona Pond

Copyright © 2010 by Leadership Solutions Ltd.
ISBN 978-0-473-16482-9

PO Box 10214, Dominion Road Post Office,
Auckland 1446, New Zealand.

Hinuera Village



The railway line reached Hinuera in 1886.



Hinuera Store opened in 1903, J.S. Browne.



Mangawhara School began in 1892. Hinuera
Primary School opened in 1907.



Postal services began in 1901.
Hinuera Post Office was built in 1907.



Hinuera Hall was built in 1915.



Hinuera church built in one day in 1920.
(Molly and Jim).



The Hinuera Co-operative Dairy Company was built
in 1922. Cecil Pond was a founding member.



James Alexander Pond c. 1900.



Herbert Cecil Pond c. 1908.
Pharmacist.



Herbert Cecil Pond c. 1908.
Farmer.

3
1908
B.L. up.
April 30 Oats & Stores
3/8 7 W. Smith 7 1 3
16
16 1/2 Plass Seed & Grov
3/8 (Grainger) - W.S. Laurie 34 19 6
28 - Deposit on Mangawhara
Hinuera, R.M. Wilson 100 0 0

J A Pond's Ledger Book, 28 April 1908.
"Deposit on Mangawhara, Hinuera,
R.M. Wilson 100 pounds".

30 FRIDAY 304-02
Promissory note due J.H. Morrison
12 0 0 36 Shortland St.
Self & Barney to Hinuera with timber &
plough & one tent returning same day.

Cecil Pond's Rough Diary, 30 October 1908.
"Self & Barney to Hinuera with timber &
plough & one tent returning same day".

November 2 MONDAY 305-03 1908
Moved camp from Puketutua to Hinuera
Barney & Joe in waggon self riding
Had 2 letters J.H. 1 O.L.
O.L. from Brown J.S. 2 lb candles
2 lbs butter; 6 lbs meat 7/1; 1 bread
Put 4 mares in Brown's paddock
Fine 3 TUESDAY 306-03
Barney & self over Hinuera seat.
To press hard Joe on track leaving

Cecil Pond's Rough Diary, 2 November, 1908.
"Moved camp from Puketutua to Hinuera. Barney
& Joe in waggon, self riding".

4 WEDNESDAY 307-07
Pitched cookhouse & my tent & fixed
up camp.
O.L. from J.S. Brown 1 head
14 lbs, mosquito netting 1/4; 7 lb Golden Syrup
1/2 lb Baking Soda 1/2 matches 1/2 box boot laces

Cecil Pond's Rough Diary, 4 November 1908.
"Pitched cookhouse & my tent & fixed up camp".

8 SUNDAY 313-03
21st Sunday after Trinity
Barney & I across swamp onto Island into
Deaths returning via Puketutu.
Sunk well

Cecil Pond's Rough Diary, 8 November 1908.
"Barney & I across swamp onto Island into
Deaths returning via Puketutu. Sunk well".

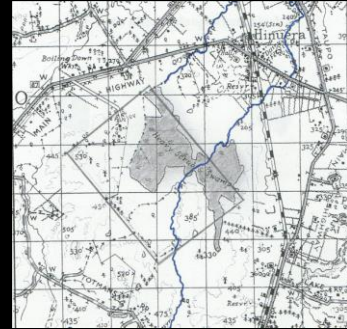
1 bush out 1 candle
 Fine 11 FRIDAY 30-12
 Barney finished all the 30 acres
 + started outside the bank
 Burned flat + New swamp.
 1 calf 1 sheep 3 milks
 Fine 12 SATURDAY 31-12
 Barney finished the 30 acres +
 started a flat. Shirts 5 6
 went to tea at 10.00
 Fine 13 SUNDAY 1-1-1909
 Barney + self climbed big hill

Cecil Pond's Rough Diary, 13 December 1908. "Barney & self climbed big Hill".

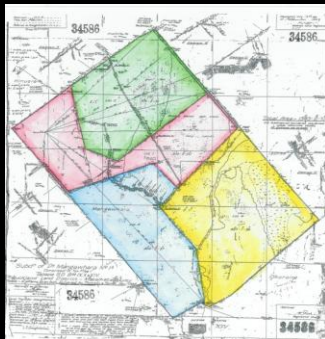
1920
 Mar. 1 Stewart Johnson & Hough
 To legal costs in transfer of
 Warlingham from L. Wilson to J.A. & H.C. Pond
 Balance of Purchase Money £700.
 Interest to 1/11/19 44-12-7
 Search, Stamp duty + registration 10-13-0
 Legal charge 5-19-0
 761 4 7

J. A. Pond's Ledger Book, 1 March 1920.
 "Transfer of Warlingham from L. Wilson
 to J.A. & H.C. Pond".

JA Pond's lands at
 Te Wautu and
 Hinuera, South
 Waikato.



Mangawhara No 1 A. Deposit £100, 28 April 1908. J. A. & H.C. Pond had bought a great swamp. The Ring family owned the adjacent swamp land (later farmed by the Gore families).



Plan of "Warlingham", 1364 acres at Hinuera. In 1949 the land was transferred to Cecil's four sons.



The "Warlingham" Homestead was built by John Smith, Ida's father in 1909.

Ida and Cecil's Seven Children



b. 1910 - 1927



Cynthia Eleanor Pond b. 28 February 1913. She was born at Ida's family home "Brompton" in Onehunga. c. 1917.



Cynthia and Olga with their home tutor at "Warlingham", c. 1919.



The Pond Children: Olga b. 1914, Neville b. 1910, Cynthia b. 1913, Jim b. 1917, Ron b. 19, Bert, 1922.



The Pond Children, c 1927 at "Warlingham": Cynthia, Olga, Bert with parasol, Ron.



Florence Nancy Pond, b. 1 March 1927.



Pond Children on the Farm, 1920s.



Pond family picnic, 1920s.
Rapurapu stream, Horahora and
Waihi Beach were favourite spots.



Pond family picnic, 1920s.



Pond family picnic, 1920s.
A friend, Bert, Ron.



Pond family picnic, 1920s:
Olga, Jim, Ida, Cynthia, Nancy, Ron, Bert.



Pond family picnic, 1920s:
Back: Olga, Neville, Cynthia
Front: Ron, Jim, Bert.



Pond family picnic, 1920s. Olga, Jim, Cynthia.



Pond Children picnicking under Piarere Bridge:
Cynthia and Nancy, c. 1927.



Pond picnic at Waihi Beach, c. 1927.



Cecil's cars in the garage at "Warlingham":
Oldsmobile, Neville's motorbike, Nash, and
Bert in cowboy rig, ca 1930.



Future sons-in-law. Accident at the Tirau railway
crossing, 10th March 1929. Carl McGirr driving.
From left: McDonald, Colin Campbell, Jack
Callaghan, Lou Wrigley (with door).





Draft horses pulling plough.



Cecil's team of horses pulling harrows. From left: Pompee, Hughie, Trilby, Vespa, Blazes.



Sampson tractor crushing tea-tree.



Samson tractor pulling rotary plough, Neville driving.



Samson tractor pulling giant discs. Neville driving.



Nancy Jones, Joyce and Thelma Hancock and Olga Pond dressed for concert item at the Hinuera Hall, c. 1932. Dairy Company factory to right.



Cynthia Eleanor Pond, age 21. 1934.



Nancy with pet lamb at "Warlingham", c. 1936.



Bert, Jim, Cecil at the cowshed. "Warlingham" 1930s.



Neville deerstalking, 1930s.



JAP II and Miss Wills visiting "Warlingham" in 1935. Cecil driving, Jim on the back.



Wedding of Cynthia Eleanor Pond and John Lawrence Callaghan.
13 March 1936, at "Warlingham".



Bride: Cynthia Pond
Flowergirl: Nancy Pond



Cynthia with her sisters: Nancy (flower girl) and Olga (bridesmaid), 1936 at "Warlingham".



"Warlingham" in pasture.
Polled angus steers, Nov, 1936.



Jim visiting "Aldon" 1st Feb 1937,
with JAP II and Mrs Murray.



The first grandchild at "Warlingham".
JAP b. 1846, Cecil Pond b. 1878, Cynthia
b. 1913, David Callaghan b. 1937.



Wedding of Olga Pond and Carl McGirr, 24 August
1937 at Matamata. From left: Edna Harris, Stan Firkin,
Carl McGirr, Olga Pond, Jim Pond, Karen McGirr.



Nancy Pond, age 9 or 10, (front, right) at Hinuera Primary School, 1937.



Neville Pond and Nancy Jones courting in the Kaimais, c. 1937.



Mrs Marion Jones, Mrs Ida Pond, Nancy Jones, Bert Pond, Cecil (H.C.) Pond. Neville and Nancy had a registry wedding in Rotorua in 1938. Ohope beach 1937.



Neville preparing his house site on top of the hill, 1937.



Neville's Chev truck outside garage at "Warlingham". He used the truck to cart shingle for his farm house, built 1938.



Nancy with "Prince" at Warlingham, c. 1938.



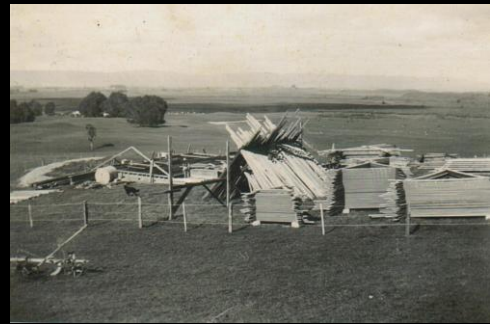
Jim with Oldsmobile at "Augnabrach", the Barron homestead, c. 1938.



JAP II beside Kingsford Smith's plane the "Southern Cross" at Waharoa, c. 1938.



Jim and Molly engaged, at Waiheke Island to see motorbike racing. Got wet through then dried out, 1939.



Foundations laid for "Emerald Hill" farmhouse, 1939. Kaimais on horizon.



"Priam" (white foal) and his mother. Priam was bred and trained by Ron.



Nancy with "Priam" in the calf paddock, c. 1940.



2nd Grandchild: Cynthia with David and Robin Callaghan, b. 1940 at Tirau, c. 1940.



Cynthia's sister Nancy with David and Robin Callaghan at Tirau, c. 1940.



Marriage of James Alexander Pond III and Mary (Molly) Harvey Barron, 13 January 1940 at Matamata Presbyterian church.



Wedding of James Alexander Pond III and Mary (Molly) Harvey Barron, 13 January 1940 at St Andrews Presbyterian church, Matamata. Frank Conder, JAP, Elizabeth Barron, Andrew Barron and Elsie Barron.



Bert in the Air Force, 1941.



Bert farewelled at "Warlingham" in 1942. Cecil, Ida, Ron, Bert, Neville, Jim holding Diana, and Nancy.



Bert departing for WWII, with Nancy at "Warlingham", 1942.



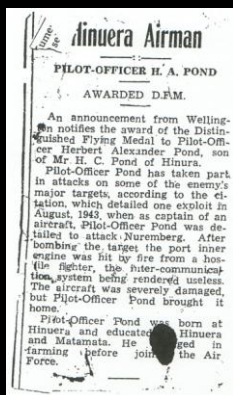
Humber Hawk at homestead waiting to take Bert and Cecil to the Hinuera railway station. 1942.



Jack and Cynthia Callaghan and Carl McGirr, with Robin (Bob), probably at the races, c. 1942.



Jack Callaghan on final leave escaping police cordon in Aunt Karen's dress. 1942.



Ron at "Warlingham", c. 1942.
 Ida, Cecil, Olga, Ron and Nancy remained at the farm homestead during the war (WWII).



Ron and Nancy at Cabbage Tree Flat below the homestead, looking east, c. 1942.



3rd Grandchild: Molly Pond and Diana, b. 1941, at Emerald Hill, 1943.



4th Grandchild: Nancy Pond with Wendy, b. 1942 and dog "Mike", at "Moehau", 1943.



5th Grandchild: May 1944 at Emerald Hill. Diana, Pam Pond b. 1943, Wendy.



Wendy on "Moehau" hill, looking southeast towards Totman's hill, 1944.



6th Grandchild: The grandchildren at "Warlingham". Pamela Pond, Robin Callaghan, Wendy, Diana, David Callaghan holding Susan Naomi Pond, b. 1944.



Cecil and Ida's first house at The Mount, 8 Ngarata Avenue, purchased around 1944.



Cecil and Ron with his dog "Rock", on the Lookout hill, c. 1945. Jim's hill in background.



Nancy and "Nifty", on the raceway to the milking shed (now Pond Road), 1940s. Neville's hill in the background.



Molly giving an apple to "Confuoko", 1940s.



Jim with Diana and Pam chopping gumtrees on home farm, 1945. Diana 4, Pam 2.



Working girls celebrating D-Day, 1945. Connie and Cynthia in Queen Street.



Cecil at Horahora, c. 1946.
The hydro power station was submerged when
Lake Karapiro was formed in 1947.



J.A. Pond family, 1946. Molly and Jim, Kim b. 1945,
Diana 5, Pam 3.



Neville Pond family: Neville, Wendy, Naomi
Susan, Nancy, c. 1946.



'Working Girls'. Cynthia and Connie in Auckland, 1946.



Nancy and Naomi Susan Pond eeling in the
Mangawhero creek, January 1947.



Naomi and Wendy Pond on Neville's hill,
looking north over "Warlingham", 1947.



8th Grandchild: David Callaghan, Roger McGirr b. 1945, Robin Callaghan at Auckland Zoo, 1948.



7th and 10th Grandchildren: Baptism Day for the J.A. Pond children, 1948. Pam, Kim b.1945, Winston b. 1947, Diana, with Jim at Emerald Hill homestead.



Kim 3, Winston 1, Diana 7 and Pam 5 at "Emerald Hill" farm, 1948.



"Pond Pie". Jim with scythe about 1948. In grass pile: Pamela, Winston, Kim and Diana.



Pamela's first day at Hinuera Primary School. Ford V8, Molly, Pamela, Diana, 1948.



Birthday party for Susan Naomi Pond, 1949. Diana Pond, Brenda Pelham, Susan, Wendy, Pam, Kim Pond, Chip (Christopher), Margie Pelham, Barry Stratton.

1950s.



Matamoras in the 1950s.



9th, 11th and 13th Grandchildren:
Bert, Gloria, Janis b. 1948, Teresa b. 1950, Claudia
b. 1946 at "Warlingham", 1950



Ron and Claudia with "Priam" c. 1950.



"Priam" with the Ellis Chalmers tractor, purchased
around 1944, looking towards Neville's hill, c. 1950.



Janis, Teresa and Claudia Pond at "Warlingham", 1951.



Wendy Pond, Judith Jones, Claudia Pond, Pam Jones,
Janis Pond and Naomi Susan Pond, c. 1950.



Claudia Pond's first day at Hinuera Primary School, 1951.



Ron and Claudia.
Ron was Claudia's godfather. 1952.



Claudia Pond and Mrs Whitmarsh
at Auckland Airport, 1952.



Nancy in London, 1952.
She was Diana's model of how to grow up.



Cynthia and Olga in Queen Street, Auckland c. 1952.



12th Grandchild: Roger and Julie McGirr, b. 1949, 1953.



Wedding of Norma Ellis and Ronald Alexander Pond,
12 June 1954.



Building Ron Pond homestead.
Hills still covered in scrub. 1954.



Scrub cover on swamp on Ron Pond's farm.
Looking west towards Neville's hill (right).



Building Ron and Norma's farm homestead. 1954.



Building the "Power House" (diesel generator and water
pump) for Ron Pond's homestead. Ron in centre. 1954.



Mangawhero Creek in flood across bridge to Ron
Pond homestead. Really on an "island". Norma
beside the Humber. 1954.



Mangawhero Creek in flood across road to Ron Pond's house, bridge under water. Jim's hill behind Norma. c. 1954.



Ron picnicking on the farm beside the "Red Terror" ("Rudolph").



Young beef stock on Ron's farm. 1950s.



Marriage of Florence Nancy Pond and Hugh Campbell McLaren, 9 October 1954.
Pamela, Hugh, Nancy, Diana, Wendy, Roger, Carl, Olga McGirr. 1954.



McLaren Wedding: Naomi, Susan, Molly, Neville. 1954.



Nancy kissing Robin Callaghan outside Holy Trinity church, Tauranga, 9 October 1954.



Florence Nancy Pond with Cecil and Ida,
9 October 1954.
Holy Trinity Church, Tauranga.



Jim with Kim and Winston Pond. 1954.



Aerial view of Ron Pond's farm and the Mangawhero
Creek, looking towards Hinuera. July 1956.



Putting in first telephone poles on Ron Pond's
farm. Ron and Hugh McLaren, 1955-1956.



Norma Pond burning crushed manuka along the
boundary between Ron's and Jim's farms. c.1955-56.



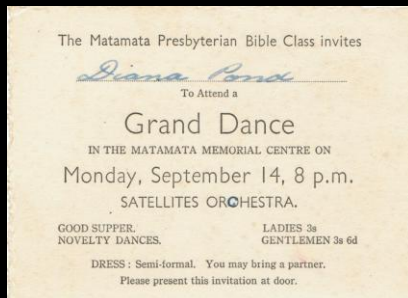
Mangawhero Creek in flood. Bridge to house
under water. (Bridge had been washed away in a
previous year.) Farmstead really on an "island".
Winter, 1956.



15th Grandchild: Norma and Richard Pond, b. 1956,
on the Fergie driving round the farm house, c. 1956.



Norma and Richard Pond with Roger McGirr
and a leveret, 1956.



1956.



Wedding of Herbert Alexander Pond and Beatrice
Anne Nicholls in Nelson on 16th September 1959.



Wedding of Herbert Alexander Pond and Beatrice Anne Nicholls. Ida
and Cecil were represented by Neville and Nancy Pond. Back:
Neville Pond, Charlotte Nicholls, Archibald Nicholls, Nancy Pond.
Front: Bert Pond, Ann Nicholls, Trevor Harris, Bridesmaid.
16 September 1959.



The New "Warlingham" Homestead,
home of Bert and Ann Pond.



Cecil and Ida's third house at the Mount at 18 Rita Street, purchased around 1959/1960. Humber Hawk.



Norma Pond with Cecil and Ida and Humber Hawk at 18 Rita Street at the Mount, 1960s.



Ida and Cecil's 50th wedding anniversary at their Mount house in Rita Street, 1960.



Roger McGirr in the garden at Te Aroha with two good Waioamou trout, 1961.

OBITUARY

Mr H. C. Pond

Own Corres. Matamata
Mr Herbert Cecil Pond, a pioneer of the Matamata district, has died aged 83.
Born in Auckland, he was educated at Auckland Grammar School and qualified as a pharmaceutical chemist. Later he gave up his career and worked in the crushing batteries of the gold mines at Waihi and Great Barrier Island.

In 1909 Mr Pond took up a large block of undeveloped land at Hinuera which is today divided into productive sheep and dairy farms owned by his family on what is known as Pond's Road.

He married Miss Ida Smith, of Onehunga, in 1910.

A foundation director of the Hinuera Dairy Company when it was formed in 1922, Mr Pond was its representative on the South Auckland Herd Testing Association during its early years. He was also a member of the Hinuera School Committee, the Farmers' Union and the Matamata Agricultural and Pastoral Association.

Mr Pond took a keen interest in many sports, including tennis, bowls and Rugby football. In 1946 he retired to live at Mt Maunganui.

He is survived by his wife, four sons and three daughters.

© 1.8/3/1962

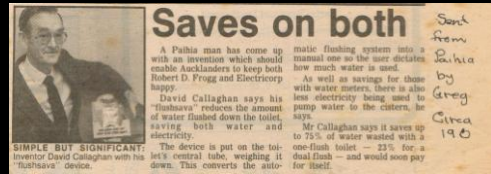
Cecil died on 3rd February 1962 and was buried at Matamata.



Diana's 21st Hinuera Hall May 1962.
Diana dancing with Jim.



Diana Pond's 21st in Hinuera Hall, May 1962.
Molly and Jim dancing (Win Oates in background).



David Callaghan received the Ernest Rutherford award for his invention of a water saving device for flush toilets, 1963.



17th, 18th and 21st Grandchildren: Norma with Helen b. 1963, Bryce b. 1960, Brenda b. 1958 and Richard Pond, in the woolshed c. 1963.



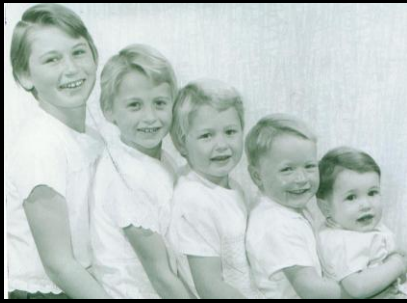
22nd Grandchild:
Bert and Ann with Kath at 5 months. 1963.



Bert and Kath getting in the wood. 1964.



Helen, Brenda and Bryce Pond with pet lambs, c. 1965.



14th, 16th, 19th, 20th, 23rd Grandchildren: Annette b. 1955, Jennifer b. 1957, Beverley b. 1960, Robert b. 1962 and Peter McLaren b. 1964. Photo c. 1965.



24th Grandchild: Alan painting the house. 1965.



J.A. Pond party. Kim's 21st at Hinuera Hall, January 1966. Ida Pond and Elizabeth Barron seated and Jim and Molly in forefront. 1966.



Roger, Julie and Carl McGirr with Aunty Karin and Gran Pond (Ida) at Roger's 21st, at Molly and Jim's home, 1966.



Robert McLaren & Kathie Pond on seat and Peter McLaren & Alan Pond on carrier of tricycle on the driveway up to Bert Pond's homestead on the original homestead block -1966.



Kath modelling for Claudia, 1967.



Roger and Carl McGirr in London, 1967.



Jim and Molly Pond at church dinner, 1960s.
(Molly's own hat creation).



Cynthia at The Mount, 1960s.



Ron and Norma Pond with Richard,
Helen, Bryce and Brenda, c. 1968.



Dragline dredging the Mangawhero Creek on Ron Pond's farm. Reach towards Gore's farm. In background is the stand of old pines planted earlier in the century. 1960s.



Neville and Nancy tailing lambs at "Moehau", 1960s.



Neville and Nancy having a cup of tea at the yards.
Moehau, 1960s.



The wettest spring known.
View from Neville's house towards Kaimai range, 1971.



Ida with Peter, Claudia, Brigid, Kath, Ann and Bert.
Christmas 1970.



Ron and Neville dipping sheep at Ron's yards, 1972.



Digger cleaning the drain at "Moehau",
No. 1 paddock, 1973.



Drought, March 1973. View from Neville's hill across
Jim's and Bert's farms. 1973.



Last year at "Moehau".
Neville drafting cattle with Alan Goodwin, 1973.



Neville and Nancy leaving the farm, 1973.



Peter and Robert McLaren on Nola's farm,
at Taihou, c. 1973.



Robert and Peter McLaren trout fishing in the
Waihou river on Nola's farm at Taihou, c. 1974.



Brigid and Kath with guinea pigs and Troy on Alan's knee
on front lawn of Bert Pond's homestead. Christmas 1973.



Claudia with Lydia, Kathie & Brigid in lounge of
Bert Pond's homestead. Christmas 1975.



Ida died on 16 July 1977, age 90. She was buried with Cecil in the Matamata lawn cemetery on a wet afternoon. The sons carrying the coffin were wearing raincoats. 1977.

1980s.



Alan, Janis, Bert and Kath on the Ferguson at the back door of Bert Pond's homestead. 1983.



Hugh and Rosemary Pond at "Warlingham" visiting from England. 1980.



Jim farmed until his last days. Jim, Kim and John Kearney feeding out at "Emerald Hill", 1980.



Nancy and Hugh McLaren, 50-50 farming at Buckland Road, c. 1980.



Nancy McLaren on "Ben" with dog "Luke", 50-50 farming on Nola's farm at Buckland Road, c. 1980.



Alan, Kathie, Ann in maize paddock. 1983.



Charlotte Pond visited from England with Alan, Bert, Ann and Troy. 1984.



Hugh McLaren with daughters Beverley and Annette, 1985.



Robert, Jennifer and Hugh McLaren, 1985.



Lydia and Bert amongst calves. 1987.



J.A. Pond Homestead, Alan Pond pilot.



Kim Pond Homestead, Alan Pond pilot.



Ron Pond and Bryce Pond homesteads,
Alan Pond pilot.



H.A. Pond Homestead, Alan Pond pilot.



Looking north over the swamp, H. A. Pond farm,
Alan Pond pilot.

1990s.



Jim and Molly Pond's Golden Wedding anniversary,
1990.



Neville and Cynthia on Founders' Day at Auckland
Museum, 1990.



Founders' Day at Auckland Museum, 1990.



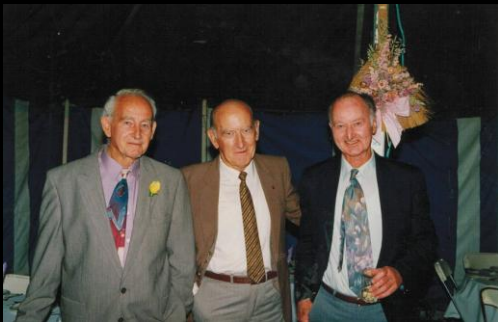
Wedding at "Warlingham": Richard Pond and Kelsey Hobman with Raakel (flowergirl), Taygen and Travis Pond. Celebrant Molly Pond. 19 November 1993.



"Warlingham" wedding of Ida and Cecil's grandson; Richard, Kelsey, Brenda, Derek and Molly Pond (celebrant).



"Warlingham" wedding; Ron and Norma Pond, Bert and Ann Pond, Molly and Jim Pond.



Ron, Jim and Bert Pond at "Warlingham" wedding, 1993.



Ron continued farming into his late 70s. Ron and Norma Pond in the shearing shed, October / November 1993.



View from Ron Pond's airstrip looking north west towards Neville's hill (left), Jim's hill (centre) and Bert's farm (right). Peria hills in the background. 1994.



View from Ron Pond's airstrip looking north across Jim's farm towards Bert's house. Ron's cowshed and woolshed. Peria hills in background. 1994.



Dome shed, cow shed; behind trees are hay shed and wool shed. Looking across Ron's farm to Jim's hill. 1994.



Wool shed (orange) and implement / hay shed (known as the "pink" shed from its earlier priming). Looking towards Jim's hill with Kim's worker's cottage. 1994.



View from hill above Ron's house looking towards Bert's house and Peria hills. 1994.



View from hill above Ron's house looking north east towards Mt Te Aroha and Hinuera. 1994.



Great swamp converted to pasture. South eastern side of the "island" looking north east across Gudgeon's and Gore's farms towards the Kaimai Range. There was a stand of old pine trees here when Ron began breaking in the land. c. 1994.



The great swamp on Ron Pond's farm was drained and brought into pasture for sheep and cattle. In 1980 the farm was converted to dairying. 1994.



Jim and Molly in the garden at "Emerald Hill", c. 1996. Matamata.



Cynthia with Jim and her partner George Walton, c. 1996.



Neville Pond died in 1997. His casket was carried by Bert, Ron and Jim Pond, Bob Todd, Roger McGirr and Sean Leach. Buffalo cemetery. 1997.



Ron Pond butchering his last sheep before leaving the farm in 1997. Dave, Kevin, and Rachael Elder.

2000s.



Diamond wedding of Jim and Molly.
Pioneer memorial stone, "Emerald Hill" farm, 2000.



Visit of Teresa to "Warlingham" in 2001. Ann, Bert ,
Teresa, Molly and Jim Pond. Painting by Claudia Pond
Eyley. 2001.



The Elders: Jim, Bert, Nancy, Ron Pond
at Bert's 80th birthday, 2002.



Bert Pond's 80th birthday, 25 April 2002. Roger
McGirr, Ann, Wendy, Nancy Pond, Nancy McLaren.



Jim Pond and Nancy McLaren at Bert's 80th birthday,
2002.



A birthday celebration for the Pond elders: Cynthia
90, Jim 87, Nancy 75 at Monte Cecilia School.
March 2003.



Pond elders blowing out the candles at Monte Cecilia school, 2003.



Smith cousins: Edna Quinn, Jim Pond, Trevor Harris, 2003.



Bert and Ann farming, July 2003.



Bert and Ann left the farm in 2004.



Old number plates in single garage. 2004.



Bert in barn with 1937 portrait by Jim. 2004.



The workers' cottage at "Warlingham" built by Ida's father has lasted a century. 2004.



Bert and Ron on the Lookout Hill at "Warlingham", 2004.



Bert and Ron with the wheel of the old Samson tractor which broke in the land in the 1930s. 2004.



Cousins' Day at Te Aroha, 2006. Standing from left: Helen Elder, Roger McGirr, Diana Freeman, Pam Holden, Courtney Callaghan-Pope, David Callaghan, Brenda Pond, Alan Pond, Julie McGirr, Winston Pond. Sitting from left: Sheila Callaghan, Norma Pond, Wendy Pond, Nancy McLaren, Ron Pond, Bert Pond.



Cousin's day at Te Aroha in search of JAP's Bendigo Battery, 2006. Roger McGirr, Claudia Pond and Peter Eyley, Wendy, Alan, Ann Pond, Pam Holden, Bert Pond.



Ida and Cecil's 100th Descendant: Jenson Daniel Pond, b 13 October 2004, descended from Te Whanau-a-Apanui & R A Pond whanau. 2009.



Ida and Cecil's grandchild Brenda Clearwater-Pond, their great grandchild Shane Taipari with partner Gina Pooley and great great grandchild Arwen Taipari, 2009.



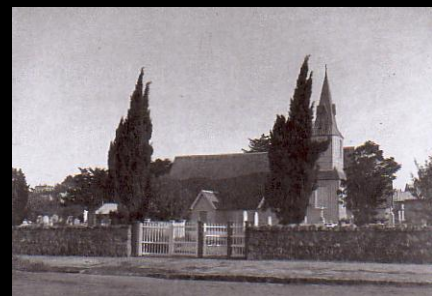
Great great grand daughter Beth Walker and her pet pig "Blossom". There are still Pond descendants at "Emerald Hill" in 2010.



St Peter's Church, Onehunga 1860. Built in 1848 in the Selwyn style. One of earliest churches in Auckland. Painting by John Kinder, 1860.



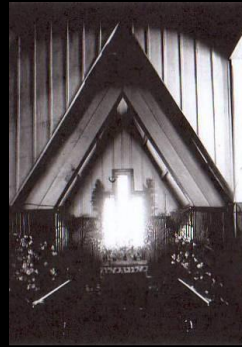
St Peter's church, Onehunga: side entrance from Queen Street (The Mall), 1912.
(Auckland Public Library photograph)



St Peter's church, Onehunga: main entrance from Church Street, 1912.
(Auckland Public Library photograph)



Interior of St Peter's church prepared for a wedding, looking down the aisle towards the rear of the church, 1912. (Auckland Public Library photograph)



Interior of St Peter's church prepared for a wedding, looking at the altar and sanctuary, 1912. (Auckland Public Library photograph)



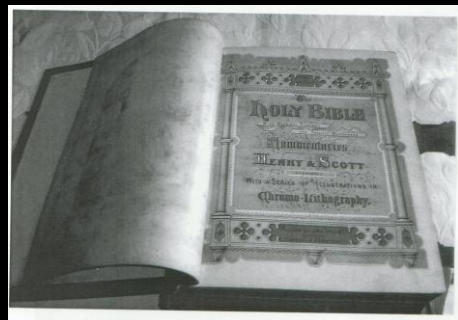
Ida Mildred Smith, b. 1887, daughter of John and Anna Maria Smith of "Brompton", Onehunga.



Wedding of Ida Smith and Cecil Pond, 1910.



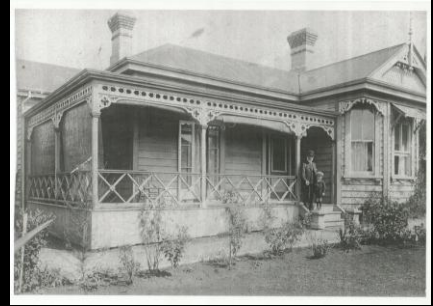
Wedding of Ida Mildred Smith and Herbert Cecil Pond at "Brompton" Onehunga on 13 January 1910.



Smith Family Bible kept by Bob Sadd.



Marriages of John Smith's children.



Ida's children at "Brompton":
John Smith with his grandson, Neville Pond, c. 1920.



Ida's children at "Brompton":
Cynthia, Jim, Olga, c. 1920.



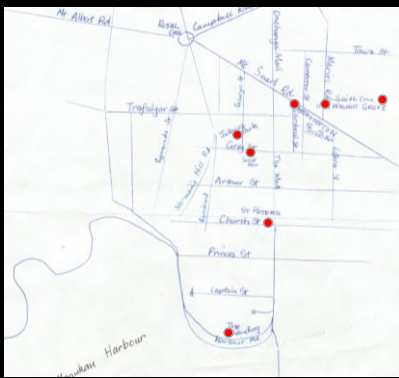
Ida's Parents at "Brompton",
John and Anna Maria Smith, c. 1910.



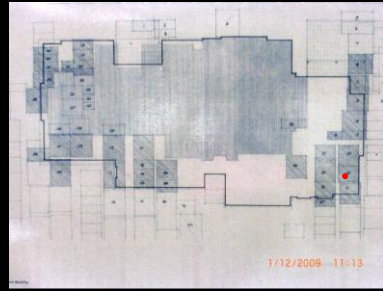
Claudia Pond Eyley tiling the grave of John and
Anna Maria Smith in the Mangere cemetery,
5 May 2006.



Grave of John and Anna Maria Smith at Mangere
Cemetery, with tiles by Claudia Pond-Eyley, 2006.



Tour of Smith family history, Onehunga.



The new St Peter's church was built over the grave of Sgt William Smith. His grave, Plot 30, red spot, is at the east end of the church, facing the Onehunga Mall.



The grave of our founding ancestors, fencible soldier Sgt William Smith (1803--1883) and his wife Sarah (1818-1866), is under the new east face of St Peter's Anglican church in Onehunga. Marked with a red spot. Additions built in 1980.



The church in which Ida and Cecil were married became the Onehunga scout den, re-erected at 55 Grey Street.



Jellicoe Park, formerly Green Park, is the site of the Onehunga blockhouse.



The Onehunga blockhouse was built in 1860 by William John Redwood. Sgt William Smith was in charge of a garrison of 12 militiamen during 1863-65. No fighting ensued.



"Brompton", 83 Mt Smart Road, cnr Cardwell. Home of John and Anna Maria Smith and family. Brompton in North Yorkshire was the home of John Balmer's regiment, the 65th.



"Walnut Grove" cottage, 11 Mariri Road. Home of Robert and Emma Smith and family.



Robert Smith ("Walnut Bob" of "Walnut Grove") is buried in the Hillsborough cemetery near the Goodall Street entrance.



Smith Crescent occupies part of the Walnut Grove estate.



Walnut trees in Jordan Ave are a legacy of Robert Smith's walnut orchard.



"The Landing" overlooks the Manukau harbour at 2 Onehunga Harbour Road. The centennial of Ida and Cecil Pond's wedding was held here on 23 January 2010.



Ida and Cecil's descendants representing the "Brompton" Wedding party at St Peter's church, 2010.

BACK ROW: (standing) from left: Mike Murray, Fencible Private John Balmer, 65th Regiment- Kim Pond, Arthur Smith - Ann Pond, Alice Graham - Beverley Hughes, Smith cousin - Bert Pond, William Australia Graham -- Richard Pond, Frederick Balmer Smith - Shane Taipari, Cecil Percy Marshall (best man) - Austin Gillman, Cecil Pond, Groom - Lydia Gillman, Ida Smith, Bride - Sean Leach, John Moore Abbott (groomsman) - Bryce Pond (obscured) , Harry Smith- Naomi Pond, Smith cousin - Roger McGirr, Fencible Sergeant William Smith, 63rd Regiment - Pamela Holden, Smith cousin - Helen Pond Elder, Smith cousin - Brenda Clearwater Pond, Smith cousin.

FRONT ROW: (seated) from left: Diana Pond Freeman, Bertha Combes Pond (mother of the groom)- Winston Pond, James A. Pond II (father of the groom) - Nancy Pond McLaren, Eleanor Combes; (grandmother of groom) - Kath Loudon, Viola Smith, bridesmaid - Teresa Pond Adams , Gladys Combes, bridesmaid - Peter Eyley, John Smith, father of the bride - Claudia Pond Eyley, Anna Maria Smith, mother of the bride - Gina Pooley, Elizabeth Smith, holding great great grandchild Arwen Taipari (as Noel Balmer Smith) Norma Pond, Mary Combes.



Brompton Wedding 2010; Bridal group.



Brompton Wedding 2010; Bridesmaid with Bride's parents.



Brompton Wedding 2010; Bride's parents with Aunt Lizzie and baby, Mary Combes and Smith cousins.



Brompton Wedding 2010; groom's father and grandmother with Alice and William Australia Graham and others.



Brompton Wedding 2010; Guests disbanding.



Brompton Wedding 2010; Guests conversing.



Brompton Wedding 2010 - All descendants: Ida and Cecil's children, grandchildren, great grandchildren and great great grandchildren.



Three generations of Smith descendants: Norma Pond, with great grandchild Arwen Taipari and daughter Brenda Pond Clearwater.



'May Smith' with Bertha's locket, worn by the bride.



James Alexander Pond's gold fob watch.



Bride with Ida and Cecil's great great grandson.



Shane Taipari, Gina Pooley and Arwen Taipari; Arwen in Cecil Pond's cot; Cecil born 1878; great great grandchild Arwen b. 2009.



Nancy Pond McLaren and Bert Pond, the remaining children of Ida and Cecil Pond.



Bert Pond with his nephews Roger McGirr and Winston Pond.



Children of James Alexander Pond III; Kim, Diana and Winston, in grounds of St Peter's church Onehunga.



Fencible soldiers and children of J A Pond III in the grounds of St Peter's Church.



Wedding Cake; baked by Diana Pond Freeman, decorated with seven flowers representing Ida and Cecil's seven children.



Bride and groom cutting the cake.



Bridal table; from left Ann & Bert Pond, Lydia & Austen Gillman; Claudia & Peter Eyley.



Ploughman's Lunch.



Our founding ancestors; Private John Balmer, arrived "Sir Robert Peel" 1847; and Sergeant William Smith arrived "Oriental Queen" 1849.